

# Venue Hire

POLYTUNNEL  
THIS WAY

COMMUNITY  
PLANT NURSERY

TOILETS  
THIS WAY

PLAY SPACE  
THIS WAY

CLASSROOM  
THIS WAY

ROUNDHOUSE  
THIS WAY

GLOBAL  
GENERATION



# Support young people, local communities, a thriving planet

Global Generation is an environmental educational charity. Founded in 2004, we grow food, people and community for a fair and just world. We operate educational and bio-diverse garden spaces across London and work to connect people of all ages to nature in the city.



Every year we directly work with **5000** children, young people, families and residents through our programmes and workshops. We engage a further **5000** people through our events and wider outreach work.

# GLOBAL GENERATION

By working with us you:

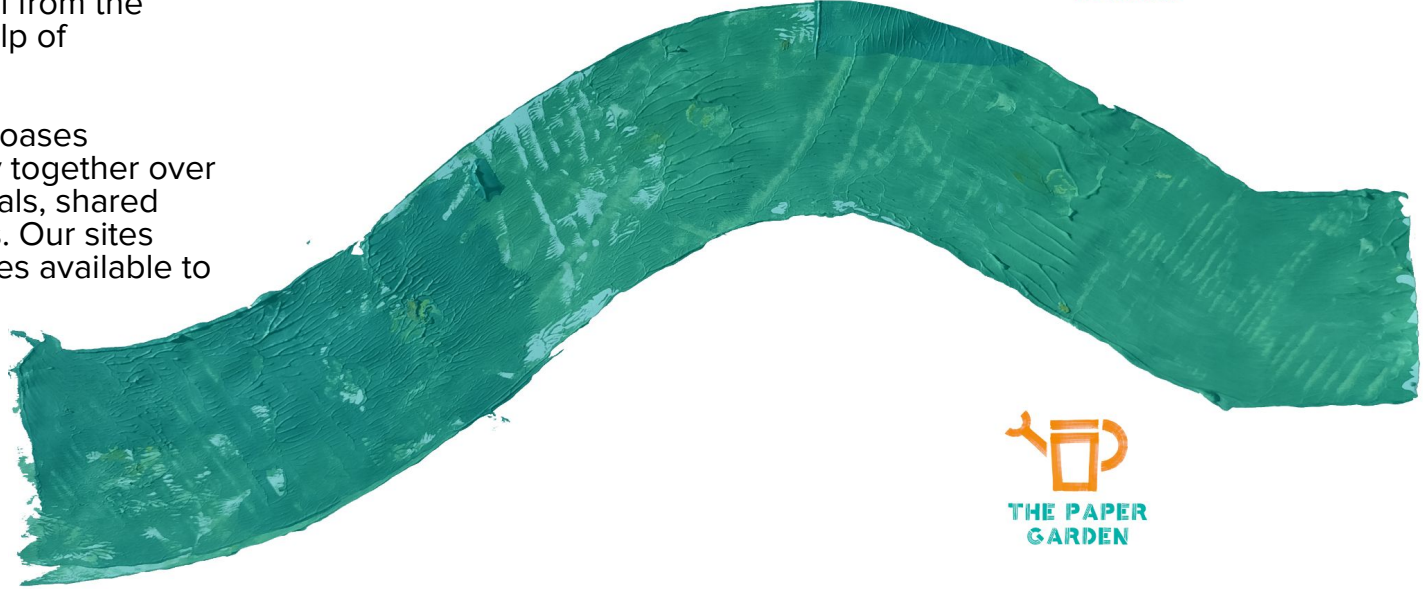
- Support our programmes on youth leadership and nature education
- Use sustainable spaces incorporating material reuse and circular design principles
- Benefit from our expertise in urban food growing, community activation and codesign
- Engage with the local community and residents who use our spaces



# Discover our sites

We have community gardens located near Kings Cross and Canada Water. Each site is built using reclaimed material from the surrounding area with the help of volunteers.

The gardens serve as green oases bringing the local community together over food growing, communal meals, shared stories and creative activities. Our sites have a range of unique spaces available to hire.



# Story Garden



**GLOBAL  
GENERATION**

# The Spaces: Story Garden

*All our spaces are set amongst the fruit trees and veg patches of our 1.1 acre community garden.*

*They come with access to free wifi.*



**Classroom**

- 6m x 5m + terrace
- 25 seated / 40 standing
- Perfect for: workshops, talks, Screenings, away days



**Skyroom**

- 6m x 3m + private terrace
- 16 seated / 20 standing
- Perfect for: meetings, round table discussions, break-out space, drinks reception



**Roundhouse**

- 6m diameter
- 16 seated / 20 standing
- Perfect for: workshops, round table discussions, kids' birthdays

# Pricing: Story Garden

All our prices are subject to VAT at a rate of 20%

Our spaces can be hired out hourly or daily with a 2 hour minimum hire period. We offer discounts to registered charities, community and voluntary groups. All our hirers are welcome to use the outdoor shared spaces as part of their hire. If you require exclusive access to an outdoor space or want to use the garden as a filming or photoshoot location, please get in touch for more information and a quote.



## Classroom

- £60/hour
- £200 half day
- £380 full day

## Skyroom & Roundhouse

- £50/hour
- £180 half day
- £300 full day

## Amenities

- **Tea & coffee station**  
(filter coffee, selection of black & herbal teas): £2/pers, refill £1/ pers
- **Projector:** £20 /half day, £35 / full day
- **Flipchart paper:** £10 / roll



# Floating Garden

*Floating Garden* powered by GLOBAL S

**GLOBAL  
GENERATION**



# The Space: Floating Garden

Regents Canal Towpath, N1  
Kings Cross St. Pancras

The Floating Garden is an exclusive hire - your group will be the sole users of the barge and the towpath. The space features a cabin, two rooftop decks, a small seating area to the front of the boat and additional access to the towpath.



**Total Venue Capacity: 24.**

Ideal for: alfresco team activities,  
dinners, drinks, away days.



## Rooftop and Towpath

Rooftop decks

- 8 seated (foredeck) / 10 standing

Towpath

- 10 seated / 14 standing



## Interior Cabin

- 12 seated / 16 standing
- Accessed by 3 steps or stairlift
- Bench style seating and table

# Pricing: Floating Garden

All our prices are subject to VAT at a rate of 20%

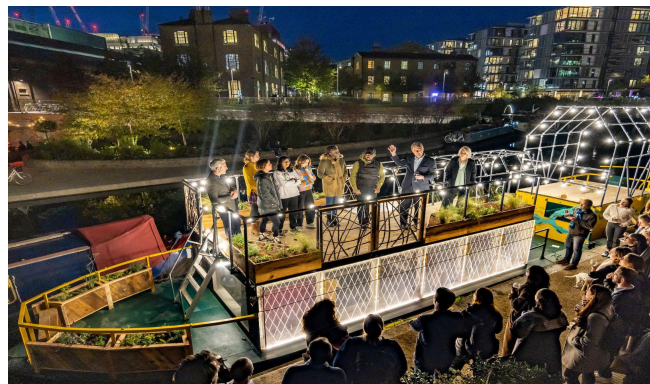
The space can be hired out hourly or daily with a 2 hour minimum hire period, with alternate pricing for daytime/weekday hire and weekend/after hour pricing. Your booking with us supports our work with young people and free community programming and bookings for local charities across our venues.



## Daytime Weekday

### Monday - Friday (9 a.m - 5 p.m)\*

- Hourly £100
- Half day £350
- Full day £700



## Weekend / After Hours

### Saturday / Sunday (9 a.m - 5 p.m)\*

- Half day £500
- Full day £1000

### After Hours (after 5 p.m.)

- Hourly £150
- Full evening booking (5 p.m. - 9 p.m.) £500



## Amenities

<b>Tea &amp; coffee station</b> (filter coffee, selection of black & herbal teas)	£2/pers
<b>Refill</b>	£1/ pers
<b>Projector</b> Half Day	£20
Full Day	£35
<b>Flipchart paper</b>	£10 / roll

\*Additional evening hours can be added to a half or full day booking at £150 per hour

# Paper Garden



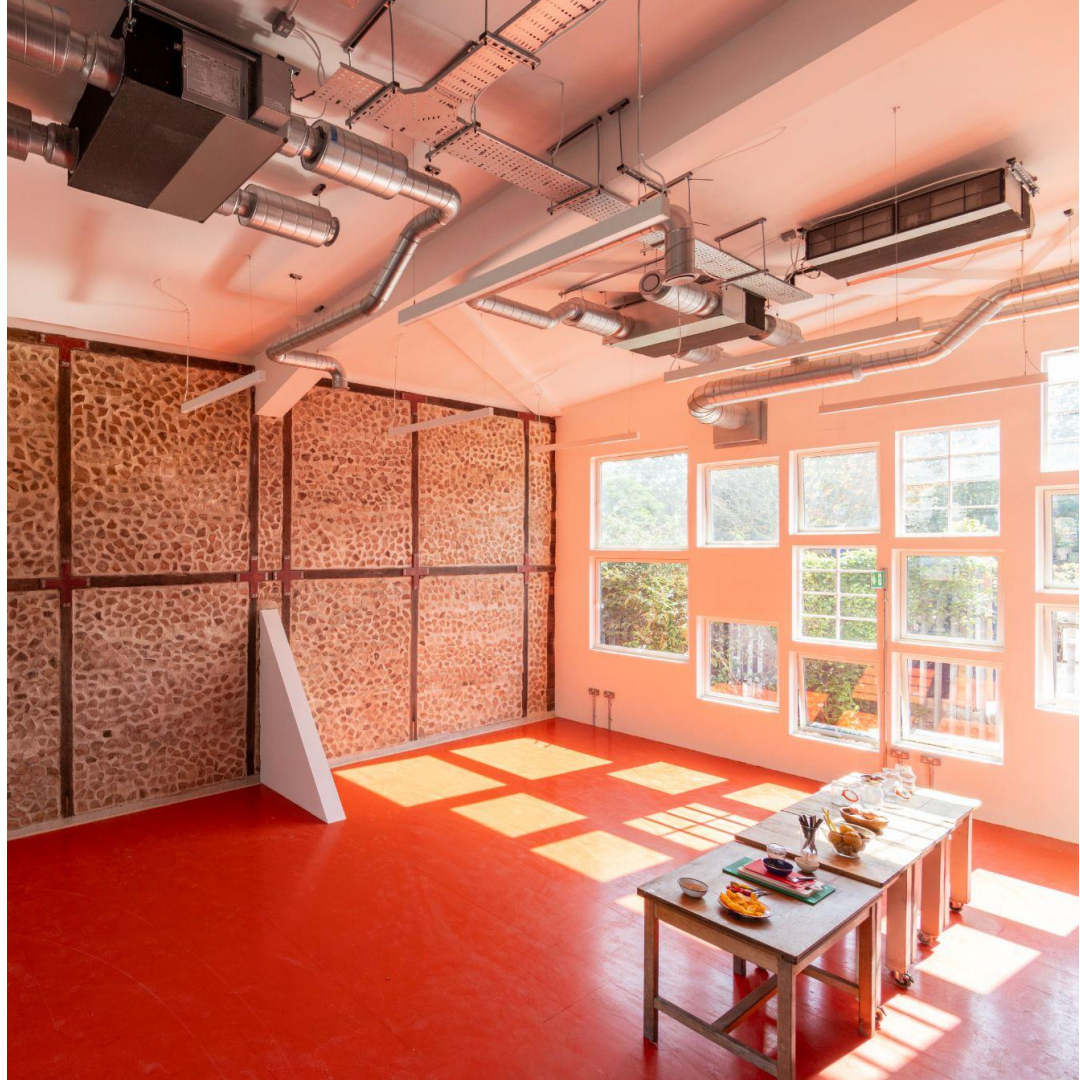
**GLOBAL  
GENERATION**

# Details

The Paper Garden venue hire is launching fully in 2024. We are accepting some early bookings of the space starting in autumn-winter 2023. Inquire about booking our dedicated meeting room or the whole garden space at [jillian@globalgeneration.org.uk](mailto:jillian@globalgeneration.org.uk)

**Accessibility:** There is a ramp to enter the building and accessible toilets on site. There are uneven paths throughout the garden area.

**3a Surrey Quays Leisure Park,  
Teredo Street, Rotherhithe,  
London, SE16 7LW**



# Workshop & Away Day Offers

Our staff run a range of hands-on workshops and bespoke training sessions. These include:

- Ceramics/ Woodworking
- Gardening & Wildlife Walks
- Nature Connection Activities
- Community Engagement
- Co-designing with young people

Speak to the team to discuss our full list of activities and pricing.



# Terms and Conditions

## Securing your booking

A 50% deposit is required to confirm your booking. Deposits are non-refundable but can be carried over to a new booking (within a 3 month period from the date of your initial booking).

If you need to make a change to your booking please let us know as soon as you can. Before paying the deposit you will also need to:

- Confirm dates and times
- Confirm estimated number of guests
- Confirm invoicing details

No booking is fully confirmed until your deposit is received.

For bookings including refreshments your final numbers and any dietary requirements must be confirmed at least 1 week ahead of your booking. We will always do our best to accommodate for any change to your booking but please note that last minute changes will not always be possible.

## Cancelling or rescheduling your booking:

Where possible we will always try to carry over your deposit to a new date within 3 months, if you choose to cancel your booking, the following fees will apply:

- Within 7 business days - full amount is due
- Within 14 days - 50% cancellation fee will be charged
- Within 30 days - 25% cancellation fee will be charged

For questions about bookings or these T&C's  
email: [jillian@globalgeneration.org.uk](mailto:jillian@globalgeneration.org.uk)