

# GLOBAL GENERATION

Co creating a garden for generations to come





## We grow Food, People and Community for a Just World

Founded in 2004, we are an environmental education charity that connects people to nature in the middle of the city.

We have been co-creating gardens with the local community on the King's Cross Estate since 2009, starting with our first Skip Garden, showcasing how disused urban spaces can become an oasis for plants and people to grow. What started as an experiment on temporary land, has grown into 4 moveable community gardens on the development site, each bigger and more ambitious than the previous one. We also support a further 40 gardens in the public realm, in local schools and estates.

In January 2024 we will have access to our first permanent site on what is currently known as the Triangle site. Contrary to our previous meanwhile spaces, we have the opportunity to grow a 1,000 year vision, thanks to a 1,000 year lease. The site, which sits just off York Way, is in an area vulnerable to the adverse risks of climate change due to air pollution and large scale development and construction. Access to green, safe spaces for those living in the area is low and social deprivation levels are high. We are committed to ensuring that the new garden will be co-created by the local community, many of whom experience social, racial and environmental inequalities daily.

The new site presents an opportunity to create a space that will benefit local people and the natural world. These benefits will be amplified due to the permanence of the site, with local people involved in the collaborative build process, instilling a sense of ownership and achievement through being part of its creation. This is particularly important in areas of rapid urban growth where this change is often out of the hands of local people, and can lead to disengagement, distrust and feelings of powerlessness.



Over 40,000 people  
have visited our  
gardens since 2009

3,000 local people  
a year take part in  
activities in our  
gardens

We engage all local  
primary and secondary  
schools



## Co - creating the garden

Co-building a permanent community garden for generations to come


Building on the community relationships, cross-sector collaborations and collective ways of working we have been developing since 2004, the new permanent garden will be a truly co-created space.

Through a circular economy model, we will be utilising the build as a learning tool showcasing different ways of building sustainably, with the majority of materials being either natural or re-used, saving materials that would otherwise be construction waste.

The design for the Triangle site has a strong focus on handmade and community build processes, engaging local children, young people, families, residents and employees in the making of:

- A large part of the classroom with local clay, built in collaboration with Earth Building Uk & Ireland
- Handmade chestnut shakes to clad the community kitchen, with timber sourced from Sussex woodlands
- Handmade bricks that will clad the office, supported by H G Matthews, one of the oldest traditional brick manufacturers in the south east
- The garden will take a permaculture approach, with our team of specialist urban gardeners guiding the co-creation processes
- Other parts of the build process including timber framing, tiling, bricklaying, decorating through collaboration with local construction colleges and apprenticeship schemes

The garden will develop incrementally, allowing lots of opportunities for people to get involved. Creating the garden in this way will ensure there is a legacy of skills and training for the community, especially for young people.



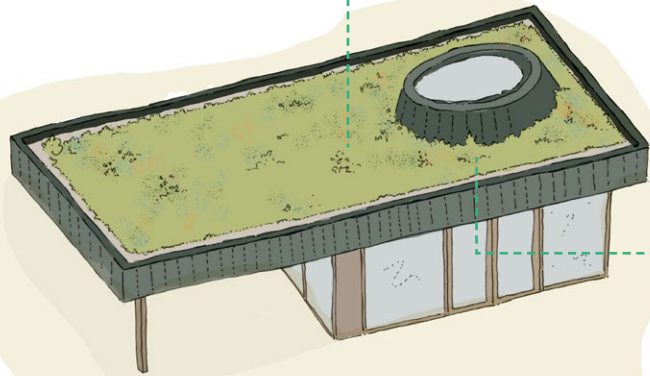
*“All I remember is arriving at the skip garden and being met by a porter-cabin full of construction workers. I remember that I was so cynical and unmotivated. I didn’t say a word. It wasn’t until the values cards were introduced and we had to explain them to each other... wow! This guy was deep. I got the chance to look behind the disguises of a construction site and realise that someone like me could talk to someone like him. We were somewhat alike. It was time to break the barrier.” Lilienne, 16 years*



## Built Structures & Community Building Process

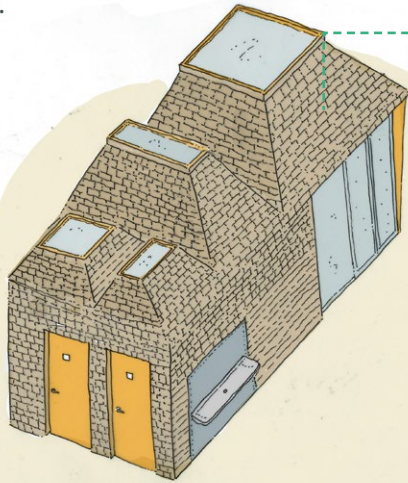
Through a community build process we will be building three different structures on the site, which will provide gathering and learning spaces for local people. We will be using sustainable, natural materials that can be easily constructed in participatory workshops with the local community, our youth programmes and young apprentices.

The process for building these structures has already commenced through our brick making and shingle making workshops at the Story Garden. These will be used to make the kitchen and classroom spaces. Additionally, we will also be using CobBauge as a construction process for building the main wall within the classroom space.



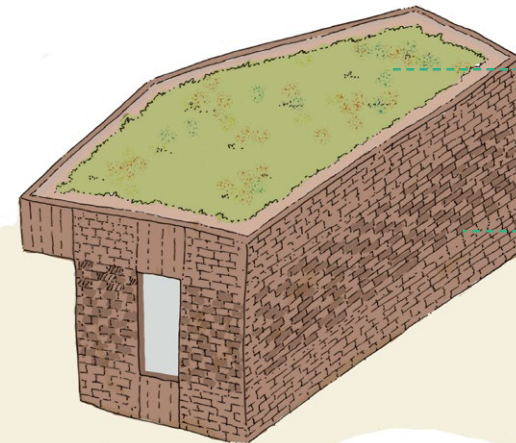
### The Classroom

The classroom consists of a large spinal wall supporting an oversailing green roof canopy. The wall will be made using a double layered cob construction.



### The Kitchen

Chestnut shakes will clad the structure housing kitchen and toilet facilities. Four glazed light wells will provide natural light into each of the spaces.



### The Office

Using locally sourced clay, we will be making 1500 bricks to create our office space within the garden. This will have a green roof to increase biodiversity on site.

## Schools and communities we work with

We work with primary and secondary schools, colleges, universities, youth groups and community groups across the boroughs of Camden and Islington.

### Local schools

1. Regents High
2. Edith Neville
3. St Mary St Pancras
4. Maria Fidelis
5. King's Cross Academy
6. Frank Barnes School for Deaf Children
7. Blessed Sacrament
8. Copenhagen

We particularly focus our community engagement on the two neighbourhoods adjacent to the Kings Cross development: Somers Town and 'the Cally'.

We are a key partner in neighbourhood wide strategies in both areas through Future Neighbourhoods in Somers Town and We Are Cally in the Caledonian Ward. We work across local estates and schools to install and support food growing and habitat development.

Our new permanent garden on the Triangle site will be the final destination of the Camden Highline, a new green corridor linking east to west across the borough.





## What this means for the natural world

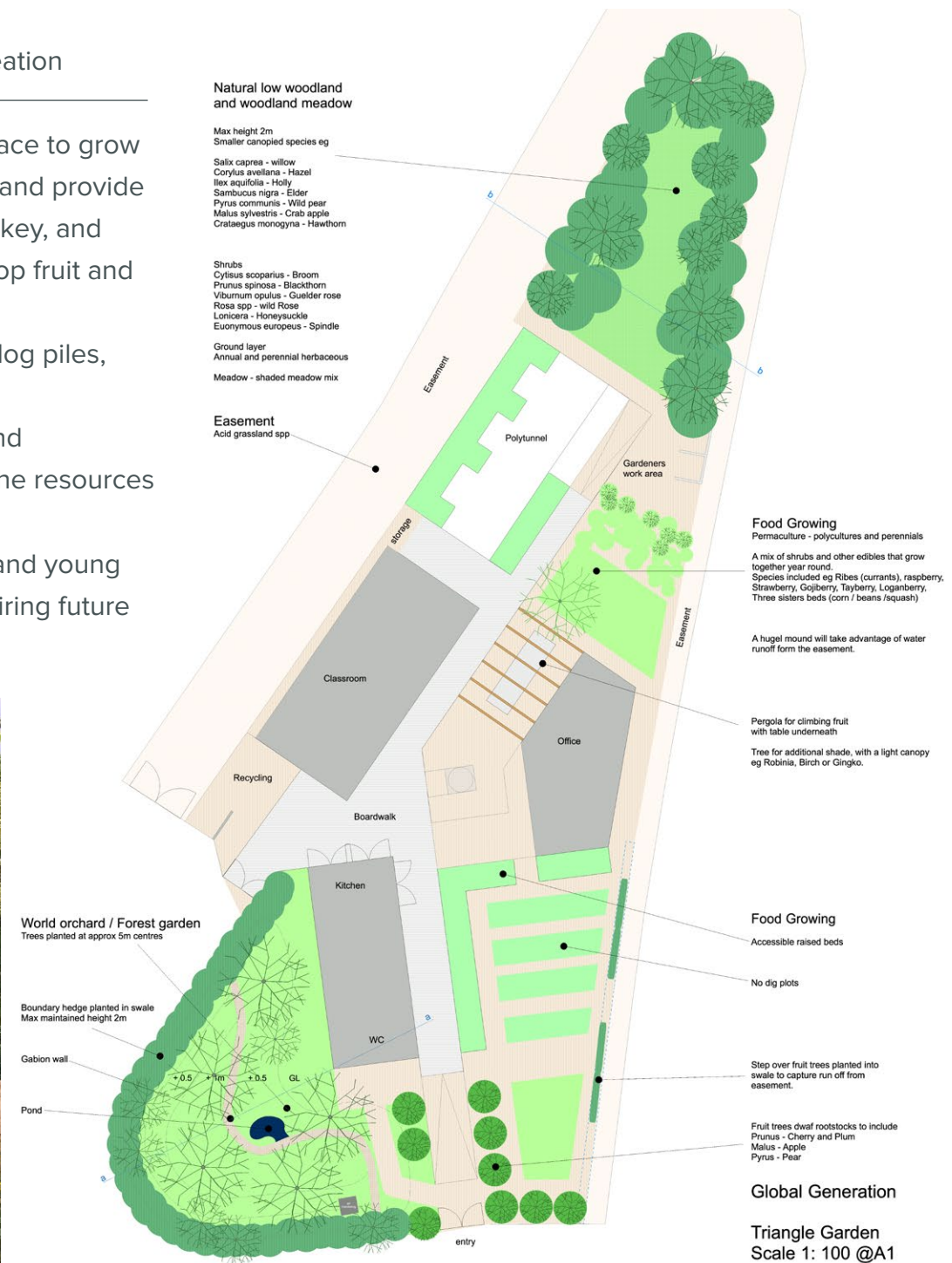
A home for the many inhabitants of our city: A biodiverse approach to habitat creation

We approach garden design holistically, understanding that our gardens are a place to grow food, create a home for diverse life, mitigate the effects of the built environment and provide gentler spaces for relaxing and nature connection in the city. Food production is key, and organically managed beds will provide seasonal produce, orchard trees supply top fruit and other perennial plants will be scattered across the site.

As a home for wildlife, we will build a mosaic of habitats including dead hedges, log piles, small ponds, bee mounds and bug hotels.

We see gardens as healthy systems, aiming for zero waste through harvesting and capturing rainwater, composting food and green waste and making the most of the resources we access by upcycling and reusing.

Building, planting, digging and harvesting, will all be carried out with volunteers and young people, showcasing some of what is possible on urban brownfield sites and inspiring future growers to transform their own green spaces.





## Polytunnel

An indoor, sheltered space used to grow produce all year round, raise seedlings and grow exotic fruits and vegetables that need a warmer space. It also functions as workshop space for training and events.

## Woodland

A dense native hedge creates a woodland glade - a sheltered space for gatherings and play. Diverse tree species, a low canopy layer and rich understory planting interspersed with log piles, untidy corners and dead wood create diverse habitats for wildlife.

## Forest Garden

An agro-ecological woodland with a canopy of fruit trees underplanted with edible shrubs, climbers, herbaceous plants and herbs, creating a diverse and multifunctional growing spaces for food production and learning.

## Food growing

Inspired by permaculture, using agro-ecological approaches to food production including no dig, organic and wildlife friendly methods, the food growing areas provide annual and perennial produce. Composting, soil care and water retention are all designed around a systems based approach to maintaining sustainable green spaces.





## What this means for young people and the community

Educational and inspirational

The Triangle site will be a space where young people and the community can come together to take care of themselves, each other and the planet. It will be a safe and inclusive space for young people and the community, supporting health and well-being through access to nature and a space to find stillness and peace.

It will also be a vibrant educational hub and demonstrator site, where knowledge and skills in food growing, gardening, cooking, wood working, and other creative and reflective practices are shared through workshops and trainings; biodiversity and climate justice are explored; and young people and the community can grow and flourish together with the natural world.



Young people and community



*“Through being involved with Global Generation, I developed my outlook on the world and my community. I understood the true meaning of values and gained confidence to be involved in things I felt excluded from. Global Generation emulsifies businesses and young people by helping them become more environmentally aware and using nature as common ground.”*

*Rachel, GG Generator -16 years*





## A snapshot of what the garden will achieve

- Create a permanent biodiverse home for Global Generation, celebrating and supporting diverse people, plants and wildlife
- Improve community cohesion, where the local community feel more connected to each other and their area by having a stake in what's going on, with ongoing opportunities for socialising, community activities and volunteering
- Support the local community to be more resilient to climate change and foster greater care and stewardship of the natural world, with the new site acting as an educational hub for local people to gain new green skills
- Foster the positive health and wellbeing of local residents, particularly encouraging and engaging those who are under-represented to find their voice and be heard
- Leave a positive legacy for the community, where people involved in its creation will have an ongoing connection to the space for generations to come
- Be a showcase and inspiration for others to create biodiverse gardens together, to understand what's possible and explore sustainable ways to enhance and improve our local built environments for the benefit of people and the natural world

*Dear Story Garden,  
Today you have taught me how to feel inspired by everything around me.  
You taught me how to become patient. You showed me how to become  
imaginative and how to show and share what I have in mind. I thought that  
this would have been very different, but in the end it was very fun. Thank  
you. Kayla, 12 years*





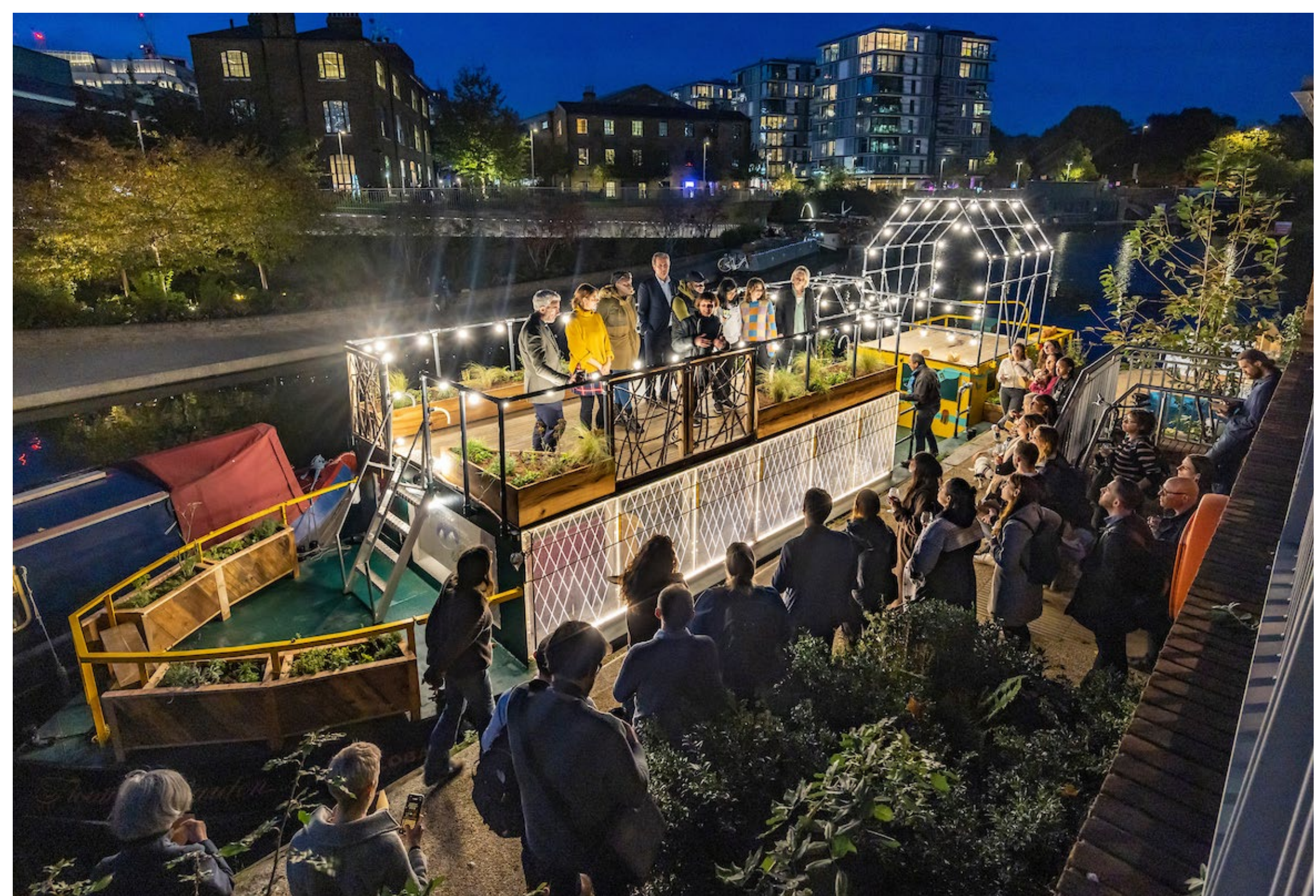
## Why Global Generation

- We are a community and environmental education charity working in the local area since 2004, trusted by the local community and local businesses alike
- We have built strong connections with local schools, community groups, TRAs, youth groups, NHS, local Councils, Universities, developers, construction companies, consultants and businesses, and provide opportunities for cross sector engagement around a shared vision
- Our gardens are showcases for innovative urban gardening and sustainable build practice. Our Paper Garden classroom build is currently the largest circular economy build in London, as well as the largest building in the UK to use the cordwood method. Other gardens include 4 iterations of the Skip Garden, Story Garden, Floating Garden and gardens on estates, schools and public realm
- We have built a strong community of interested parties in the construction industry and initiated conversations around future possibilities for construction practice in the UK
- We lead as an example of best practice for meanwhile sites, utilising in-flux spaces for community and city greening and nature connection benefits, this ensures we have the right approaches and connections for a permanent site
- We work with and engage universities in regards to sustainable cities, building, landscape design, urban agriculture and on site experience, encouraging future generations of city makers to think differently. Currently this includes King's College London, UAL, Imperial College London, UCL, the Bartlett and University of Greenwich
- We work with an interdisciplinary team of educators, artists, ecologists, designers and makers to support and implement the work, ensuring we are able to engage with as wide a cross section of people as possible



Some of our other spaces, including the Skip Garden, the cordwood walls at the Paper Garden and the Roundhouse at the Story Garden. The Floating Garden is shown below







## Get Involved

---

We are looking for supporters to help us establish and run our new permanent garden who are able to contribute financially as well as offer pro bono support in the form of materials and / or labour to help with infrastructure and build.

Benefits of supporting the build of the Triangle site:

- Contribute to a local initiative benefitting local children, young people and the most deprived families
- Be part of creating a natural habitat area to improve biodiversity in the middle of London for generations to come
- Connect with the local community
- Deliver ESG goals in a genuine way
- Be part of a major circular economy build project, working in partnership to showcase how this can be done for other spaces
- Logo on our website, access to our logo and other comms opportunities
- Updates through written pieces, photography and film on how your support has helped
- Collaborative PR opportunities to raise brand profile, especially around ESG goals and wellbeing targets
- Volunteering opportunities for your team

Supporters so far include Argent, Olayan Group, Phoenix Court Works and Freeman Trust

Whether you are considering funding a capital project, our core work, or to provide a pro bono service, your support will create meaningful opportunities and experiences for local young people and community members to become involved at all stages of the build process.

### We need support for

- A Classroom Building featuring a CoBauge wall, a natural building technique using local clay that will be built through a community build process involving local young people, residents and volunteers  
**£170,000**
- A Kitchen Building using handmade chestnut shakes using timber from woodland management from Wilderness Woods in Sussex  
**£215,000**
- An Office Building using handmade bricks made by the local community and supported by HG Mathews, one of the remaining traditional brick makers in the south east of England  
**£225,000**
- The Garden, including soft landscaping and planting, irrigation, signage, fencing, decking and lighting  
**£430,000**







*I asked the school to change the trip to the Globe theatre because they wanted it to be on Monday but I said: "Mia has to be at the story garden on Monday". I can't miss a week on Monday. I want to be here otherwise I don't feel happy. Mia 11 years*